



# ProTaper Gold<sup>®</sup>

The name you know and trust



STERILE

# Trusted performance and predictable shapes

Our high-quality instruments are individually packaged and sterile to minimize infection risk. Ideal for maximum cutting efficiency and reduced risk of cross contamination.

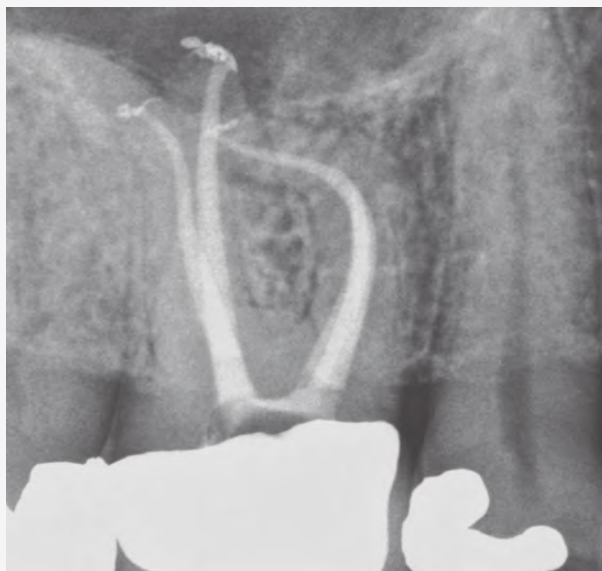
The ProTaper Gold® technology includes a series of “Shaping” and “Finishing” files that create the predictable ProTaper® shapes, and a system proven and trusted by clinicians throughout the world.

“We all know that shaping significant canal curvatures can be scary. Gold has given me a new level of confidence and control that turns this fear into fun.”

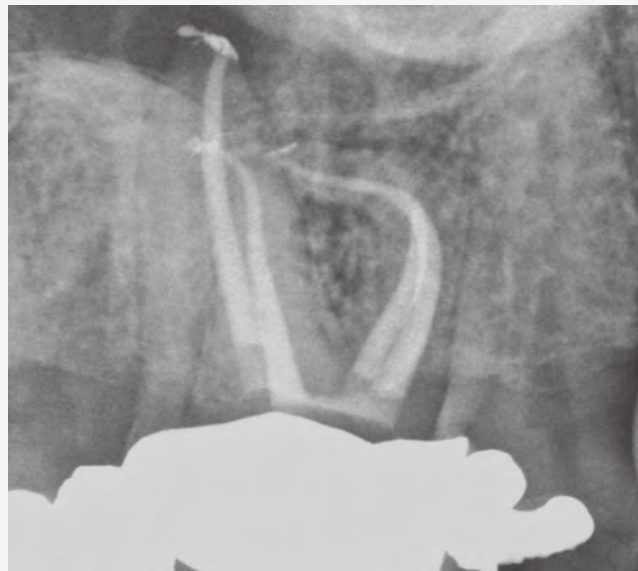
Dr. Jordan C. West, DDS, MSD



Pre Op View



Post Op Perpendicular View



Post Op Distal Oblique View



The proprietary processing of ProTaper Gold® allows it to maintain the canal curvature.<sup>1</sup>

<sup>1</sup> Gagliardi J, Versiani MA, de Sousa-Neto MD, Plazas-Garzon A, Basrani B. Evaluation of the Shaping Characteristics of ProTaper Gold®, ProTaper Next®, and ProTaper® Universal in Curved Canals. J Endod. 2015 Oct;41(10):1718-24.

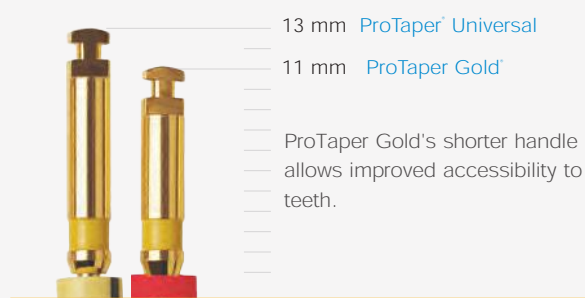
# Greater flexibility start – to – finish

The visibly advanced metallurgy of ProTaper Gold® creates a difference you can see – and feel. That's because ProTaper Gold® rotary files feature the same exact geometries as ProTaper® Universal, but offer an increase in flexibility. This is especially important in the finishing files, when navigating challenging curves in the apical region.

**ProTaper Gold® shaping files** pre-enlarge canals and are designed to be used with the same familiar outstroke brushing technique.



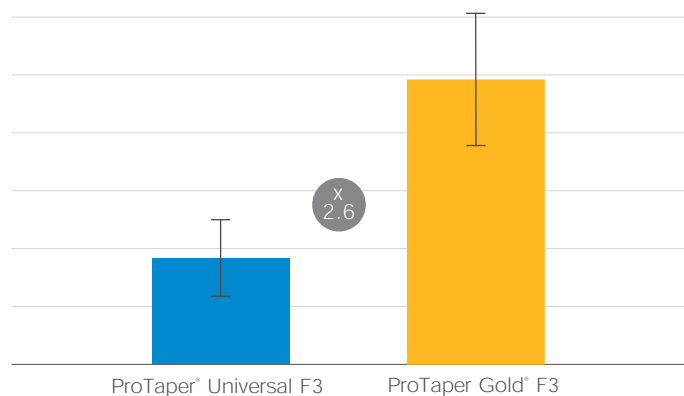
**ProTaper Gold® finishing files** are more flexible so you can shape and finish each canal with a complete system approach.



\*variable taper

# Greater resistance to cyclic fatigue

ProTaper Gold® provides more than twice the resistance to cyclic fatigue as ProTaper® Universal.\* And that's an important advantage, because cyclic fatigue is the leading cause of file separation.<sup>2</sup>

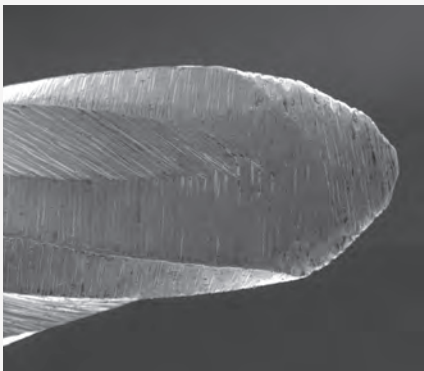


<sup>2</sup> Shen Y, Cheung GS, Bian Z, Peng B. Comparison of defects in ProFile and ProTaper® systems after clinical use. J Endod. 2006 Jan;32(1):61-5.  
\* Average value for ProTaper Gold® compared to ProTaper® Universal. Based on internal testing. Data on file.

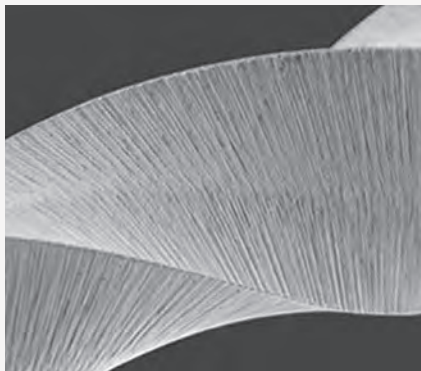
# Familiar efficiency

The majority of clinicians\* prefer ProTaper Gold® over ProTaper® Universal rotary files because they create the same smoothly tapered shapes as ProTaper® Universal<sup>3</sup> while delivering significant new advantages.

You get enhanced flexibility and resistance to cyclic fatigue, with the familiarity of a complete file system you know and trust.



The non-cutting tip design allows each instrument to safely follow the secured portion of the canal while the small flat area on the tip enhances its ability to find its way through soft tissue and debris.<sup>4</sup>



The convex triangular cross-section and progressive taper enhance cutting action while decreasing rotational friction between the blade of the file and dentin.<sup>5</sup>

ProTaper Gold® features a patented, progressively tapered design that has been trusted by dentists for more than ten years.



The variable taper of ProTaper Gold® Conform Fit® gutta-percha predictably fits canals shaped with ProTaper Gold® and delivers warm gutta-percha up to 4 mm beyond the heat source. Corresponding paper points and obturators for ProTaper Gold® are available.



ProTaper Gold® uses the same rotary action and works with the same motor settings as ProTaper® Universal.

3 West J. Endodontic Update 2006. J Esthet Restor Dent. 2006; 18(5): 280-300. Review.

4 Blum JY, Machtou P, Ruddle C, Micallef JP. Analysis of mechanical preparations in extracted teeth using ProTaper® rotary instruments: value of the safety quotient. J Endod. 2003 Sep;29(9):567-75.

5 Berutti E, Negro AR, Lendini M, Pasqualini D. Influence of manual preflaring and torque on the failure rate of ProTaper® rotary instruments. J Endod. 2004 Apr;30(4):228-30.

\* Internal testing. Data on file.

# ProTaper Gold®

The geometries of ProTaper® with advanced metallurgy

## THEN

ProTaper® Universal sets a new standard in efficiency.

## NOW

The ProTaper® legacy continues with ProTaper Gold®:

- +24% increased flexibility<sup>\*\*</sup>
- x 2.6 greater resistance to cyclic fatigue<sup>\*\*\*</sup>
- Shorter 11mm handle
- Packaged pre-sterilized and fit for single-use

ProTaper Gold® features the same simplicity and smoothly tapered shapes you know and trust from ProTaper® Universal. Developed with proprietary advanced metallurgy, ProTaper Gold® rotary files offer greater flexibility for ProTaper® performance that's better than ever.

\*\* Average value for ProTaper Gold® compared to ProTaper® Universal. Based on internal testing. Data on file.

\*\*\* For ProTaper Gold® F3 finishing file. Average cyclic fatigue resistance of the ProTaper Gold® system is x 2.4 superior to the ProTaper® Universal system. Based on internal testing. Data on file.

# Product references



## ProTaper Gold® Files



|                |           |
|----------------|-----------|
| <b>STERILE</b> | <b>SX</b> |
| PTGRSX19       | 19MM      |



|                |           |
|----------------|-----------|
| <b>STERILE</b> | <b>S1</b> |
| PTGRS121       | 21MM      |
| PTGRS125       | 25MM      |
| PTGRS131       | 31MM      |



|                |           |
|----------------|-----------|
| <b>STERILE</b> | <b>S2</b> |
| PTGRS221       | 21MM      |
| PTGRS225       | 25MM      |
| PTGRS231       | 31MM      |



|                |           |
|----------------|-----------|
| <b>STERILE</b> | <b>F1</b> |
| PTGRF121       | 21MM      |
| PTGRF125       | 25MM      |
| PTGRF131       | 31MM      |



|                |           |
|----------------|-----------|
| <b>STERILE</b> | <b>F2</b> |
| PTGRF221       | 21MM      |
| PTGRF225       | 25MM      |
| PTGRF231       | 31MM      |



|                |           |
|----------------|-----------|
| <b>STERILE</b> | <b>F3</b> |
| PTGRF321       | 21MM      |
| PTGRF325       | 25MM      |
| PTGRF331       | 31MM      |



|                |           |
|----------------|-----------|
| <b>STERILE</b> | <b>F4</b> |
| PTGRF321       | 21MM      |
| PTGRF325       | 25MM      |
| PTGRF331       | 31MM      |



|                |           |
|----------------|-----------|
| <b>STERILE</b> | <b>F5</b> |
| PTGRF521       | 21MM      |
| PTGRF525       | 25MM      |
| PTGRF531       | 31MM      |

|                              |      |       |
|------------------------------|------|-------|
| <b>Assortment file packs</b> |      |       |
| PTGRA21                      | 21MM | SX/F3 |
| PTGRA25                      | 25MM | SX/F3 |
| PTGRA31                      | 31MM | SX/F3 |



## ProTaper Gold® Paper points



Box of 180x **sterile** paper points

|          |                     |
|----------|---------------------|
| PTGAPF1  | F1                  |
| PTGAPF2  | F2                  |
| PTGAPF3  | F3                  |
| PTGAPF4  | F4                  |
| PTGAPF5  | F5                  |
| PTGAPAST | Assorted Box of 180 |



## ProTaper Gold® Conform Fit® Gutta – Percha



Box of 60x variable tapered Gutta – Percha points

|         |    |
|---------|----|
| PTGGPF1 | F1 |
| PTGGPF2 | F2 |
| PTGGPF3 | F3 |



## ProTaper Gold® Obturators



Blister of 6x obturators

|          |    |
|----------|----|
| PTGOB6F1 | F1 |
| PTGOB6F2 | F2 |
| PTGOB6F3 | F3 |
| PTGOB6F4 | F4 |
| PTGOB6F5 | F5 |

Box of 30x obturators (5 blisters)

|           |    |
|-----------|----|
| PTGOB30F1 | F1 |
| PTGOB30F2 | F2 |
| PTGOB30F3 | F3 |
| PTGOB30F4 | F4 |
| PTGOB30F5 | F5 |



Above products designed for single use.



ProTaper Gold® Files come pre-sterile and ready for use.



DENTSPLY Tulsa Dental Specialties  
DENTSPLY International, Inc.  
608 Rolling Hills Drive  
Johnson City, TN 37604, USA  
Phone: 1-800-662-1202  
dentsplysirona.com

